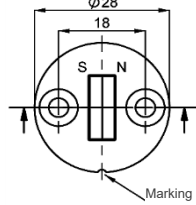
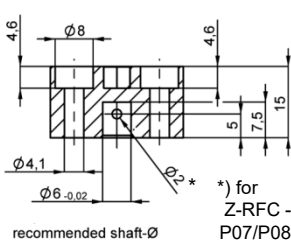


Z-RFC-P01 / P02 / P07 / P08 / P41 / P47

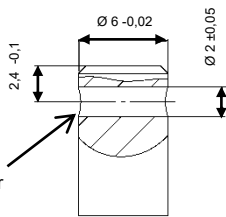


*) for Z-RFC - P07/P08: M5
recommended shaft-Ø

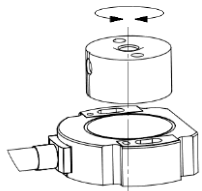
Installation instructions

Axial mounting with 2 screws M4 x 20, max. tightening torque 300 Ncm
Radial mounting with threaded pin M5, max. tightening torque 120 Ncm

For Z-RFC-P01/P02 Recommended shaft setup

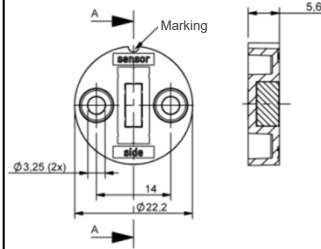


Cross hole for fixation with locking pin



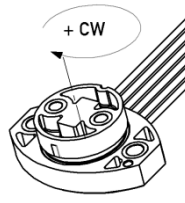
Index position

Z-RFC-P30 / P31



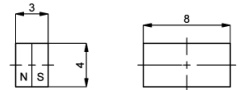
Installation instructions

Axial mounting with 2 screws M3 x 8, max. tightening torque 200 Ncm

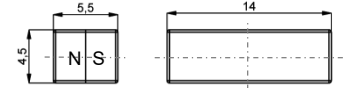


Index position

Z-RFC-P03

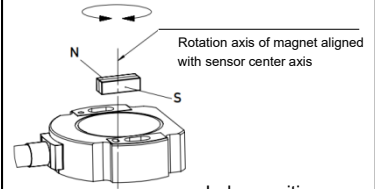


Z-RFC-P04



Installation instructions

Avoid mechanical load. Glue in place with anaerobic glue e.g. Weicon AN 306-30, in non-magnetizable material (recommended, otherwise the working distances will be reduced).

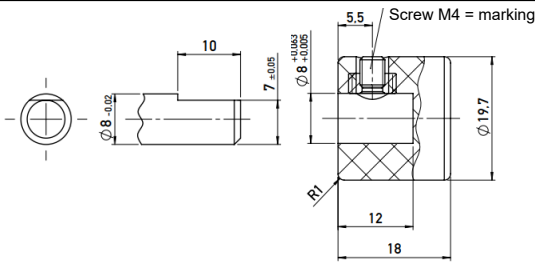


Index position

Z-RFC-P23 / P43

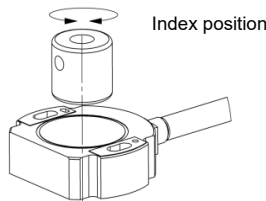
Shaft setup

A flattening is recommended at screw pressing point for fixation with threaded pin



Installation instructions

Radial mounting with threaded pin M4, max. tightening torque 100 Ncm (retightening after 5 min. and periodic control for permanent maximum holding force)

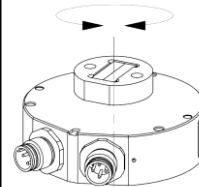


Index position

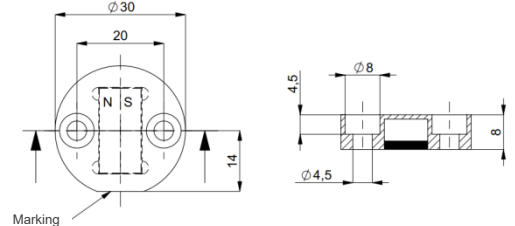
Z-RFC-P22

Installation instructions

Axial mounting with 2 screws M4 x 20, max. tightening torque 300 Ncm

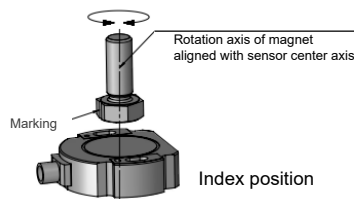


Index position



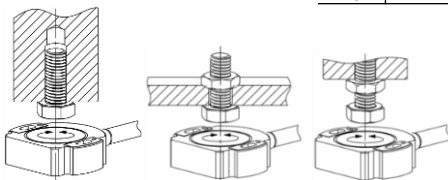
Installation instructions

Directly screwed or secured by mounting nut. It is absolutely recommended to secure the position marker against rotation.

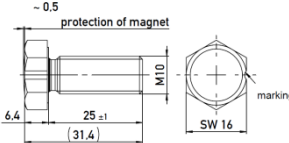


Index position

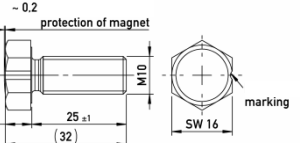
	Max. tightening torque	
	Z-RFC-P17	Z-RFC-P19
M8	12 ... 16 Nm	6 Nm
	Z-RFC-P16	Z-RFC-P18/P20/P28
M10	12 ... 16 Nm	10 Nm



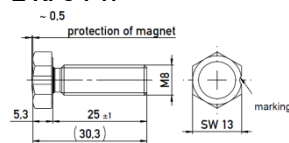
Z-RFC-P16



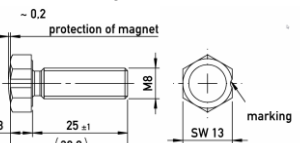
Z-RFC-P18



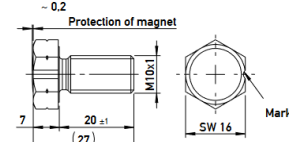
Z-RFC-P17



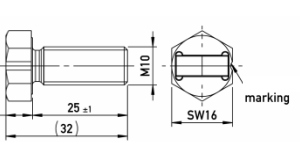
Z-RFC-P19



Z-RFC-P28



Z-RFC-P20



Working distances (in mm): distance between position marker and sensor housing		Z-RFC- P01/P07 P30 P03 P04 P23 P31 P20 P02/P08 P41/P47 P43 P22 P16/P18/P28 P17/P19													
Series	Interface														
RFC-4801/4802/ 4861/4862	-6_ _ _ _ _ _ _ _ _ _ analog single -2_ _ - 8_ _ _ _ _ _ _ _ SPI	0 ... 1.5			0 ... 4				0 ... 2.7			-	0 ... 4.5	0 ... 2.2	
RFC-4853/4854	-6_ _ _ _ _ _ _ _ _ _ analog single	0 ... 1.5			0 ... 4				0 ... 2.7			4.4 ... 9.2	0 ... 4.5	0 ... 2.2	
RFC-4801/4802/ 4861/4862	-7_ _ _ _ _ _ _ _ _ _ analog red. -8_ _ _ _ _ _ _ _ _ _ analog red.	0 ... 1.5			0 ... 4				0 ... 2.3			-	0 ... 4	0 ... 1.7	
RFC-4853/4854	-7_ _ _ _ _ _ _ _ _ _ analog red. -8_ _ _ _ _ _ _ _ _ _ analog red.	0 ... 1.5			0 ... 4				0 ... 2.3			4 ... 8.8	0 ... 4	0 ... 1.7	
RFC-4801/4802	-2_ _ - 4_ _ _ _ _ _ _ SSI -2_ _ - 5_ _ _ _ _ _ _ Incremental	-			0 ... 1.4				-			-	-	-	
RFC-4851/4852	-6_ _ _ _ _ _ _ _ _ _ analog single -2_ _ - 61_ _ _ _ _ _ CAN single -2_ _ - 65_ _ _ _ _ _ CAN single -2_ _ - A_ _ _ _ _ _ _ IO-Link single	0.7 ... 2.2			2.3 ... 5				0 ... 2.7			4.4 ... 9.2	0 ... 4.5	0 ... 2.2	
RFC-4851/4852	-7_ _ _ _ _ _ _ _ _ _ analog red. -8_ _ _ _ _ _ _ _ _ _ analog red. -2_ _ - 62_ _ _ _ _ _ CAN red. -2_ _ - 66_ _ _ _ _ _ CAN red.	0.3 ... 1.8			1.9 ... 4.5				0 ... 2.3			4 ... 8.8	0 ... 4	0 ... 1.7	
RFC-4863/4864	-6_ _ _ _ _ _ _ _ _ _ analog single	0.7 ... 2.2			2.3 ... 5				0 ... 2.7			-	0 ... 4	0 ... 2.2	
RFC-4863/4864	-7_ _ _ _ _ _ _ _ _ _ analog red. -8_ _ _ _ _ _ _ _ _ _ analog red.	0.3 ... 1.8			1.9 ... 4.5				0 ... 2.3			-	0 ... 3.5	0 ... 1.7	
RFD-4021/4031	-6_ _ _ _ _ _ _ _ _ _ analog single	-	1.2 ... 2.7	1 ... 3	2.8 ... 6.2			-	0.9 ... 3.4	6.1 ... 10.9	0 ... 5	0 ... 2.8			
RFD-4021/4031	-7_ _ _ _ _ _ _ _ _ _ analog red. -8_ _ _ _ _ _ _ _ _ _ analog red.	-	0.7 ... 2.3	0.6 ... 2.6	2.8 ... 6.2			-	0.5 ... 2.9	5.6 ... 10.4	0 ... 4.5	0 ... 2.3			
RFX-6901	-6_ _ _ _ _ _ _ _ _ _ analog single -7_ _ _ _ _ _ _ _ _ _ analog red. -8_ _ _ _ _ _ _ _ _ _ analog red. -2_ _ - 62_ _ _ _ _ _ CAN red. -2_ _ - 66_ _ _ _ _ _ CAN red.	-			0.3 ... 3.5				-			2.6 ... 7.3	0 ... 2.5	-	
RFX-6901	-2_ _ - 61_ _ _ _ _ _ CAN single -2_ _ - 65_ _ _ _ _ _ CAN single	-			0.8 ... 4				-			2.9 ... 7.7	0 ... 3	-	
RFE-3201	-6_ _ _ _ _ _ _ _ _ _ analog single -2_ _ - 61_ _ _ _ _ _ CAN single -2_ _ - 65_ _ _ _ _ _ CAN single	-	0.4 ... 1.9	2 ... 4.7			-	-	0 ... 2.4	4.1 ... 8.9	0 ... 4	0 ... 1.8			
RFE-3201	-7_ _ _ _ _ _ _ _ _ _ analog red. -8_ _ _ _ _ _ _ _ _ _ analog red. -2_ _ - 62_ _ _ _ _ _ CAN red. -2_ _ - 66_ _ _ _ _ _ CAN red.	-	0 ... 1.5	1.6 ... 4.2			-	-	0 ... 2	3.6 ... 8.4	0 ... 3.5	0 ... 1.3			

Lateral offset of sensor and position marker causes an additional linearity error. A concentric mounting has to be ensured.

Additional error [°] at radial displacement		Z-RFC-P02 / P04 / P08 / P20 / P23 / P31			Z-RFC-P41 / P43 / P47			Z-RFC-P01 / P03 / P07 / P30			Z-RFC-P16 / P18 / P28			Z-RFC-P17 / P19			Z-RFC-P22		
Series	Interface	0,5 mm	1 mm	2 mm	0,5 mm	1 mm	2 mm	0,5 mm	1 mm	2 mm	0,5 mm	1 mm	2 mm	0,5 mm	1 mm	2 mm	1 mm	2 mm	4 mm
RFA-40 RFC-48 RFD-40 RFE-32 RFX-69	-6_ _ _ _ _ _ _ _ _ _ * analog single * -2_ _ - 8_ _ _ _ _ _ _ _ SPI -2_ _ - 61_ _ _ _ _ _ CAN single -2_ _ - 65_ _ _ _ _ _ CAN single -2_ _ - A_ _ _ _ _ _ _ IO-Link single	0.4	1.1	3.5	0.4	1.1	3.5	1.4	3.7	-	0.7	1.3	3.3	1.3	2.6	-	0.8	1.8	5.4
RFA-40 RFC-48 RFD-40 RFE-32 RFX-69	-7_ _ _ _ _ _ _ _ _ _ * analog red. * -8_ _ _ _ _ _ _ _ _ _ * analog red. * -2_ _ - 62_ _ _ _ _ _ CAN red. -2_ _ - 66_ _ _ _ _ _ CAN red.	0.7	1.8	5.2	0.7	1.8	5.2	2.5	6.4	-	1.1	2	4.6	2.3	4.5	-	1.1	2.4	6.7
RFX-69	-6_ _ _ _ _ _ _ _ _ _ analog single -7_ _ _ _ _ _ _ _ _ _ analog red. -8_ _ _ _ _ _ _ _ _ _ analog red.	-	-	-	-	-	-	-	-	-	-	-	-	-	-	-	1,1	2,4	6,7
RFC-48	-2_ _ - 4_ _ _ _ _ _ _ SSI -2_ _ - 5_ _ _ _ _ _ _ Incremental	0.4	0.7	2.2	-	-	-	-	-	-	-	-	-	-	-	-	-	-	-

* except RFX